

HOLDING MAGNETS

SAV 240.09

With h6 tolerance

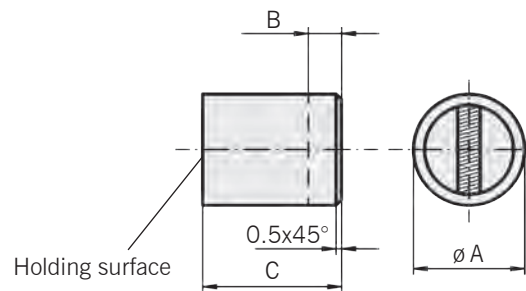
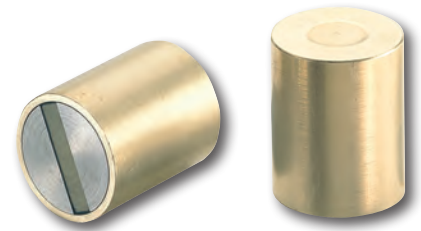
Execution:

Brass magnet housing with integrated sandwich magnet system.
Max. application temperature: 200 °C

Magnetic material: SmCo₅

Fixing options:

Press-fitting, gluing



Type	Dimensions in mm				Nom. Holding force in N	Weight in kg
	A _{h6}	B ¹⁾	C	D ²⁾		
MH 9 - 01	6	10	20	1.5	8	0.004
MH 9 - 02	8	10	20	1.5	22	0.008
MH 9 - 03	10	8	20	2.0	40	0.012
MH 9 - 04	13	6	20	2.5	60	0.020
MH 9 - 05	16	2	20	3.0	125	0.032
MH 9 - 06	20	5	25	4.0	230	0.060
MH 9 - 07	25	7	35	5.0	400	0.140
MH 9 - 08	32	5	40	6.0	600	0.265

- 1) The rear side of the cylinder magnet can be reduced up to dimension B without a reduction in the holding force.
- 2) When machining the holding surface, the maximum machining depth is dimension D, otherwise the holding force will decrease significantly.

Ordering example:

Holding magnet SAV 240.09 - MH 9 - 04
Ordering key SAV - No. - Type

HOLDING MAGNETS

SAV 240.10

High energy magnets

Execution:

SmCo₅ magnets have a 3- to 5-fold holding force compared to standard holding magnets. The magnets are enclosed in a steel housing (shielded).

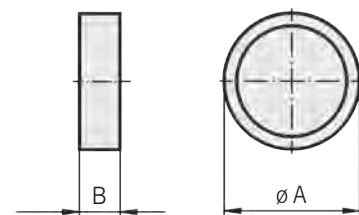
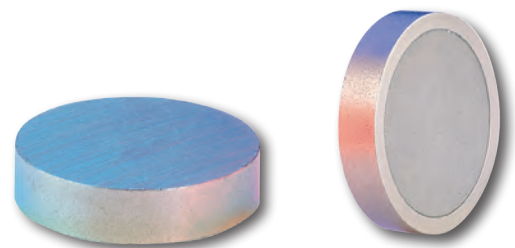
Max. application temperature: 200 °C

Magnetic material:

Samarium-Cobalt, SmCo₅

Fixing options:

Press-fitting, gluing, fill fitting



Type	Dimensions in mm		Nom. Holding force in N	Weight in kg
	A _{±0.15}	B _{±0.15}		
MH 10 - 01	6	4.5	5	0.001
MH 10 - 02	8	4.5	11	0.002
MH 10 - 03	10	4.5	20	0.003
MH 10 - 04	13	4.5	40	0.005
MH 10 - 05	16	4.5	60	0.007
MH 10 - 06	20	6.0	90	0.015
MH 10 - 07	25	7.0	150	0.027
MH 10 - 08	32	7.0	220	0.044

Ordering example:

Holding magnet SAV 240.10 - MH 10 - 08
Ordering key SAV - No. - Type