

PERMANENT MAGNETIC BLOCK



SAV 242.07

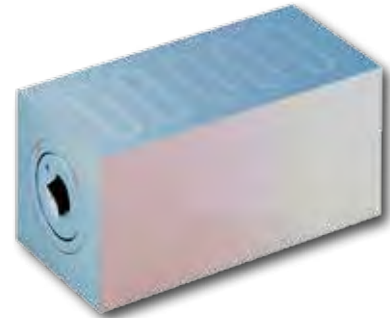
Switchable

Use:

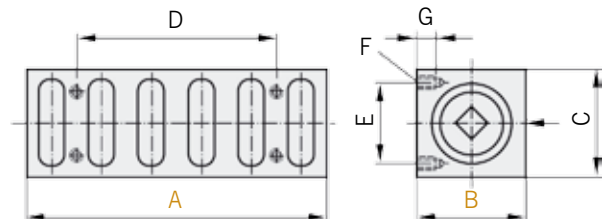
In combination with magnetic chucks, for grinding workpieces with protruding features, narrow sides, positioning templates etc.

Features:

Switchable permanent magnet with clamping face on the upper side. Side faces are ground square to one-another.



Dimensions in mm							Weight in kg
A	B	C	D	E	F	G	
115	40	40	75	30	M 5	7	1,3
135	50	60	80	40	M 6	10	2,9



1 magnetic clamping surface

Ordering example:

Permanent Magnetic Block SAV 242.07 - 135 x 50
Ordering key SAV - No. - A x B

PERMANENT MAGNETIC SWITCHABLE BLOCK



SAV 242.11

With 4 magnetic clamping surfaces, also in stainless execution

Use:

Angular and parallel grinding of small and medium-sized workpieces.

Features:

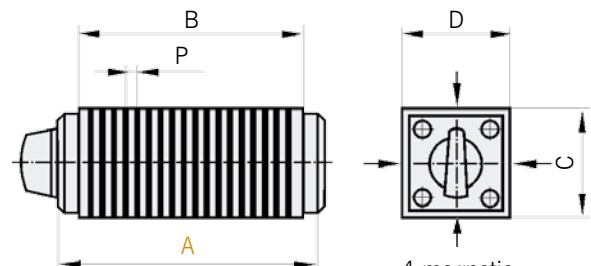
Robust construction with good holding force. Laminations 2 mm brass / 2 mm steel.

Nominal holding force standard: 50 N/cm²
Nom. holding force stainless (RF): 30 N/cm²
Magnetic field height: 2 mm
Pole plate wearing limit: 4 mm

SAV 242.11 - RF Can be supplied with stainless, high-alloyed chrome steel pole plates. Best suited for use on wire erosion machines.



Dimensions in mm					Weight in kg
A	B	C	D	P	
140	115	64	64	2 + 2	3,1
160	135	64	64	2 + 2	4,0



4 magnetic clamping surfaces

Ordering example:

Permanent Magnetic Switchable Block SAV 242.11 - 140 - RF
Ordering key SAV - No. - A - Execution