

PERMANENT MAGNET V-BLOCKS

With four magnetic contact surfaces

Use:
Positioning

Features:

4 magnetic contact surfaces (top and bottom sides and 2 shoulders), which are switched on and off simultaneously. 2 opposite-facing switching points incl. removable socket key. Available in wooden storage case SAV 539.02 - HK2 at a surcharge.

Available singly (S) or in pairs (P).

The V-block pair is ground to the same height.

Planar parallelism: < 0.01 mm

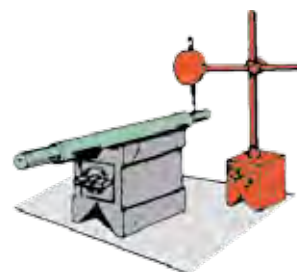
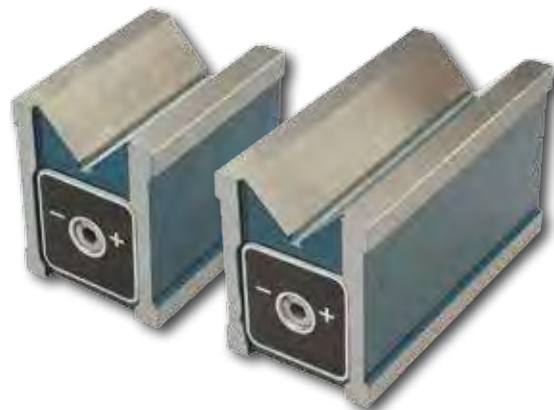
Length	Dimensions in mm			Workpiece diameter	Width large V-block	Nom. hold. force in daN	Weight in kg
	Width	Height	Height				
80	60	73	6 - 50	38	30	2.0	
125	60	73	6 - 50	38	45	3.3	

Ordering example:

Permanent-Magnet-Prisma SAV 242.21 - 125
Ordering key SAV - No. - Length



SAV 242.21



PERMANENT MAGNET V-BLOCKS

Single or in pairs

Use:
Positioning

Features:

2 magnetic contact surfaces (large „V“-block and opposite face), which are switched on and off simultaneously.

Available single (S) or in pairs (P). Available in wooden storage case SAV 539.02 (for S) and SAV 539.04 (for P) against price adder.

Rectangularity: 0,004 mm
Planar parallelism: 0,004 mm

Length	Dimensions in mm			Workpiece diameter	Nom. hold. force V-block in daN	Nom. hold. force to surface in daN	Weight in kg
	Width	Height	Height				
80	67	96	6 - 66	40	90	2.9	
100	70	96	6 - 70	40	120	3.8	

Ordering example:

Permanent Magnet V-Blocks SAV 242.22 - 100 - S
Ordering key SAV - No. - Length - Single or pair



SAV 242.22

