

PRECISION RADIUS DRESSING DEVICE

SAV 434.01

For profiling grinding wheels

Application:

With this radius dressing device, grinding wheels of up to \varnothing 400 mm, with concave and convex radii, can be profiled.

Features:

The lapped, robust spindle runs in a honed bore and is sealed against dust. With graduated angular scale. The radius movement is limited by adjustable end stops. The height of the arm with the diamond dresser can be set by means of a threaded adjuster.

With the help of a fine adjusting screw on the arm, the diamonds can be brought into the correct position with high precision.

The precision radius dressing device is supplied with 3 replaceable dressing sets and dressing arm "2".

Optionally, two additional arms with larger machining radius ranges are available. Arm 3 with 100 mm raiser foot for dressing larger radius ranges.

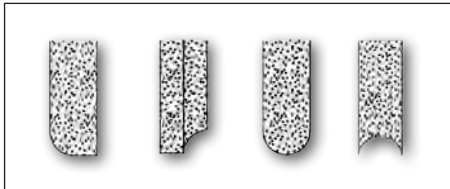
Accessories:

Dressing diamond SAV 401.01 K 10, Type D

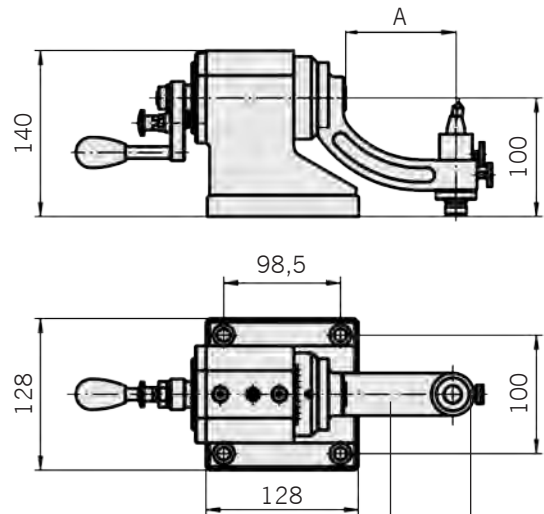
Arm 1 - SAV 434.01 - 1

Arm 3 - SAV 434.01 - 3

Both supplied at a surcharge.



Examples of profiled grinding wheels.



Dressing arm 1, 2 or 3

Dressing insert (set 3 pieces)
included in the delivery

Arm	1	2*	3
Machining radius concave mm	19 - 112	0 - 22 / 108 - 155	151 - 199
Machining radius convex mm	-	0 - 25	21 - 68
Arm length A mm	143	143	158

* included in the delivery

Ordering example:

Precision Radius Dressing Device SAV 434.01
Designation SAV - No.