

PRECISION RADIUS DRESSING DEVICE

SAV 434.02

1

For profiling grinding wheels

Application:

With this radius dressing device grinding wheels, with concave and convex radii together with adjoining angled faces, can be profiled.

Features:

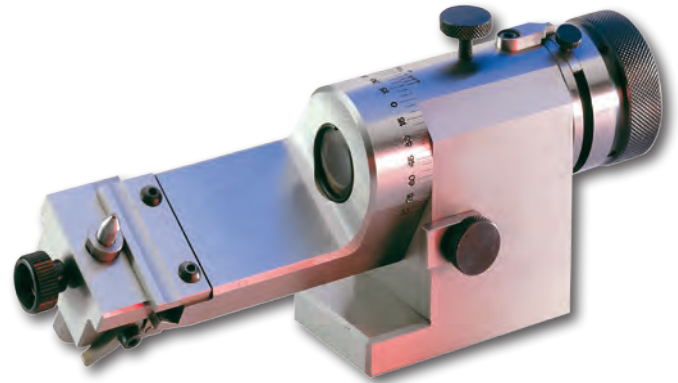
Fully precision-ground construction with end stops and a magnifying glass in the spindle. The rotating arm is equipped with a graduated scale. The radius movement is limited by adjustable end stops. The slide plate with the dressing diamond is attached to the rotating arm using a dovetail construction.

The dressing diamond is positioned using end-gauges.

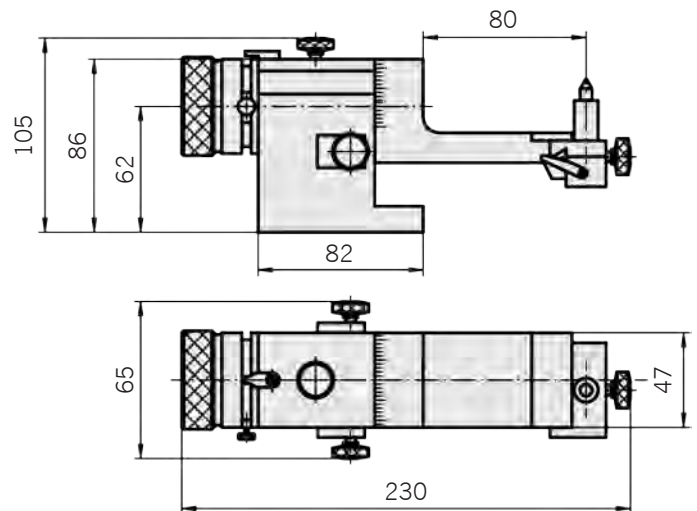
With the help of a fine adjusting screw on the diamond holder, the diamonds can be brought into the correct position with high precision.

Accessories:

Dressing diamond SAV 401.01 - 06, Type D supplied at a surcharge.



Examples of profiled grinding wheels



| | | |
|--------------------------------------|-------|----------|
| Axis height | in mm | 62 |
| Max. machining radius | | |
| - concave: | in mm | 26 |
| - convex: | in mm | 16 |
| max. grinding wheels - \varnothing | in mm | 200 |
| Bore hole for diamond | in mm | 6 |
| Adjustment range | in mm | ± 15 |
| Weight | in kg | 4,1 |

Ordering example:

Precision Radius Dressing Device SAV 434.02
Designation SAV - No.